

**"ALL-IN-ONE" IS THE  
BIGGEST MYTH  
IN EDUCATION**

**Juniper**  
Education



# They told you that one system could do it all.

That an “all-in-one” solution would solve the unique, complex challenges of your school.

But here’s the truth: these systems don’t solve real problems. They never will.

Persistent absenteeism, rising SEND demands, rock bottom staff morale, spiralling behaviour management.

These aren’t issues that can be fixed with “one-size-fits-all” solutions. They don’t have the depth.

## Schools are complex ecosystems.

Educators deserve to take back control with an approach that respects your community and its diverse needs.

You and I both know your school is diverse and dynamic, where people, processes, and priorities must work in harmony.

It’s a place of beautiful chaos, where challenges and their solutions are rarely simple.

## It’s time to let go of the “all-in-one” myth.

I get it. The promise of everything in one place is tempting.

It sounds simple. It seems convenient.

But I think saving time and reducing the admin burden should be the *least* you expect from your education tools.

The price schools pay for convenience are platforms that force you into rigid workflows, undermine the tools you already rely on, and fail to address the intricate, ever-changing reality of running a school.

# The Juniper Education team believe there is a better way.

We are taking a stand against monolithic software systems. Because “one-size-fits-all” is a dangerous approach.

Solving your school’s most pressing challenges takes more than “one solution for all your needs” convenience.

Every educator deserves to work within an ecosystem approach that respects your school and its diverse, nuanced needs.

That’s why we’ve created JoinUp, a smarter way to achieve real change in your school.

## I believe the future of education is JoinUp.

- ✦ Best-in-class tools, joined up to solve specific challenges.
- ✦ Seamless integration, ensuring everything works together.
- ✦ The flexibility to adapt to your school’s unique needs.

Juniper is an ecosystem full of specialist tools and services working in harmony, tailored to the way your school operates.

Maybe it’s time to embrace a smarter, more connected way of working.



Chris Scarth  
CEO, Juniper Education



**COMPLEX  
SCHOOL ISSUES  
CANNOT BE FIXED  
WITH AN "ALL-IN-ONE"  
PROMISE OF  
"CONVENIENCE".**



**REJECT  
COMPROMISE.**



## What challenges do you really want to solve?



- 🕒 Saving some admin time?
- 💻 Making everyone use the same things?
- 📄 Running the school through top-down, centralised, "one-size-fits-all" policies?

## Or would you prefer to work on fixing the main problems you're facing?

- ✧ Persistent absenteeism?
- ✧ Rising SEND needs?
- ✧ Behavioural challenges?
- ✧ Staff retention and morale issues?



## We know these aren't problems you can solve with shortcuts.

### The Juniper Education team believe there is a better way.

Juniper's unified approach – MIS, Sonar, Sisra, Timetabling, HR, Finance, and the first parental Comms Hub to embrace social media – offers streamlined workflows, improved data continuity, and enhanced community engagement.

It's time to break away from rigid, monolithic "all-in-one" monosystems and create ideas and strategies that truly work for schools like yours.



IF YOU FEEL  
**LOCKED IN**  
TO AN "ALL-IN-ONE"  
SOLUTION,  
YOU PROBABLY  
ARE.



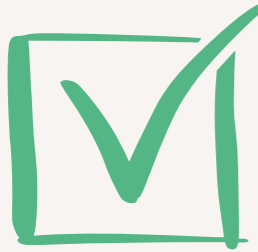
YOUR TEAM  
DESERVES BETTER.

**BREAK  
FREE**

**WITH JUNIPER**



**"EVERYTHING IN  
ONE PLACE."**



**"EVERYTHING WORKING  
TOGETHER SEAMLESSLY."**



Schools are complex organisations, where every decision, every investment, every experience collides, mixes, and ripples into each part of a school's ecosystem.

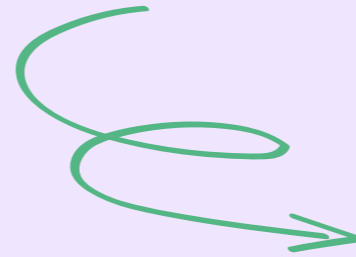
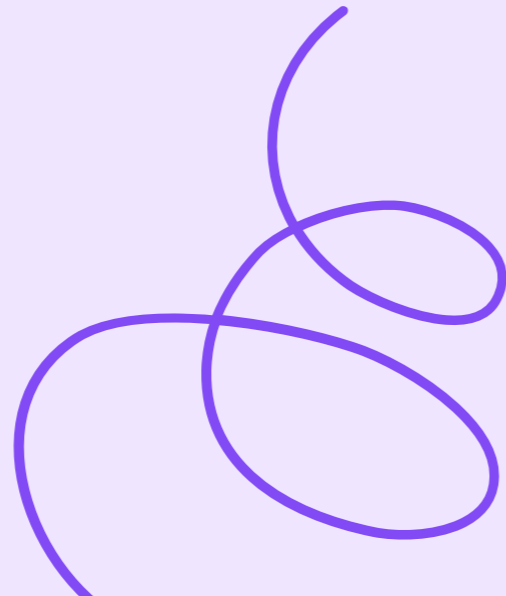
Yet, "all-in-one" monolithic solutions oversimplify this complexity, failing to provide:

- ✧ Effective tools to strengthen family relationships.
- ✧ Customised SEND support for unique pupil needs.
- ✧ Streamlined solutions to ease staff workloads.
- ✧ Targeted behaviour management resources.

Don't you deserve more than catch-all solutions?

**Join 15,000+ schools who  
already use our ecosystem to  
support their individual needs.**

IF THOSE "ALL-IN-ONE" SYSTEMS  
**CLAIM TO SAVE YOU**  
SO MUCH TIME,  
WHY ARE YOU  
BUSIER THAN EVER?



**YOU CAN  
DEMAND  
BETTER.**



# An ecosystem approach naturally adapts to every school's diverse needs.

## A happier team builds a better school.

From HR and payroll to CPD, our approach ensures school staff feel supported, creating opportunities for staff to do their most valuable work.



## Smoother, streamlined operations.

Make the admin of finance, governance, and reporting more efficient — without compromise.

## A smarter strategy at the heart of your school.

Ecosystem thinking addresses things like attendance challenges, SEND support, and communication gaps effectively, helping you achieve your improvement plans and supporting whole-school success.



## Leaving the monosystem behind.

Juniper's JoinUp approach offers schools and MATs the freedom to customise and connect, without compromise.

Keep the tools you love, integrate the ones you need, and build a system that works for you.





**"ONE SYSTEM TO DO IT ALL?"  
NOT A CHANCE.**



**SOLVE REAL  
PROBLEMS  
WITH JUNIPER**



# **"All-in-one" monosystems create unintended consequences.**

## **Let's talk about the monosystem problem**

### **Monosystems treat schools as if they are all the same.**

They try to push one way of working on everyone.

But schools are far too complex and unique for this approach.

They usually claim they can "do everything" in one place. But this convenience comes at a cost:

- Root problems are ignored.
- Staff spend time on surface-level tasks, like attendance numbers, but can't see why students are missing school or how to fix it.
- Lack of nuance.

### **Monosystems oversimplify problems.**

They force schools to follow their way, even if it doesn't fit.

Monosystems don't understand schools are connected and complex.

- New policies, student needs, or challenges can pop up at any time.
- A monosystem is set. It can't grow, adapt, or change to fit a school's needs.
- This forces schools to "fit into the system" instead of the system working for them.

### **Monosystems create unintended consequences.**

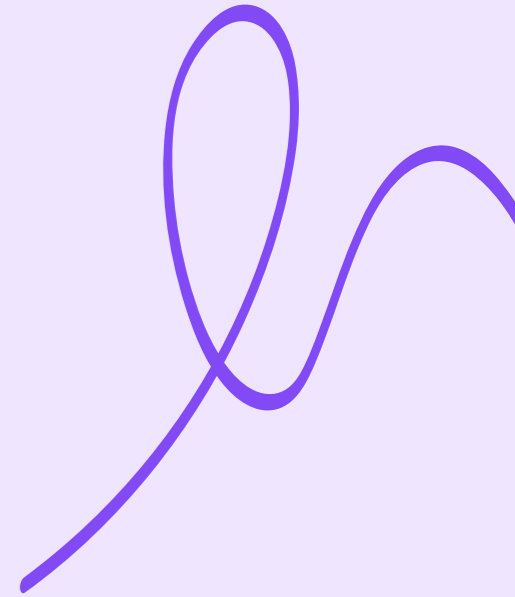
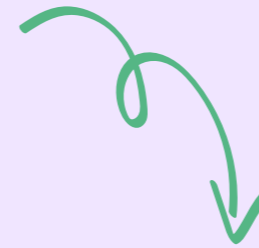
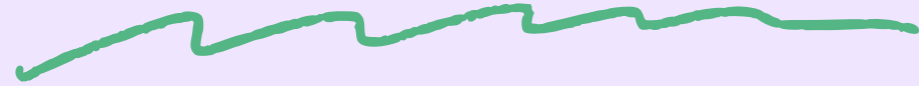
They pressure schools to work within their limits, often making problems worse, such as:

- Generic, automated messages that frustrate parents instead of building trust.
- Missing the real issues behind challenges like absenteeism or SEND support because the system isn't flexible enough to tackle them properly.

It's like trying to use one key to open every door in the school.

It works for some, but most locks just won't budge. Schools are complex, and they need the right key for each challenge.

**YOUR SCHOOL  
IS NOT A FACTORY.  
YOUR SCHOOL IS  
AN ECOSYSTEM.**



**EMBRACE IT.**



# Your school community deserves a smarter, more inclusive approach - one that adapts to your school, not the other way around.

	Monosystem	Juniper's Ecosystem
<b>Understanding schools</b>	Assumes all schools are the same by design	Sees schools as complex ecosystems - each school is unique
<b>Problem solving</b>	Applies "all-in-one" thinking, ignoring the root causes of problems	Offers tailored tools that address the real causes of challenges
<b>Flexibility</b>	Rigid and inflexible - can't adapt to unique school challenges	Flexible and modular - adapts to the specific needs of schools
<b>Connection</b>	Fails to see how problems are connected	Understands that everything in a school is connected
<b>Impact on parents</b>	Frustrates parents with generic, impersonal communication	Builds trust with parents through personalised communication
<b>Long-term success</b>	Quick fixes that often create new problems and don't last	Creates long-term, sustainable solutions that help schools thrive

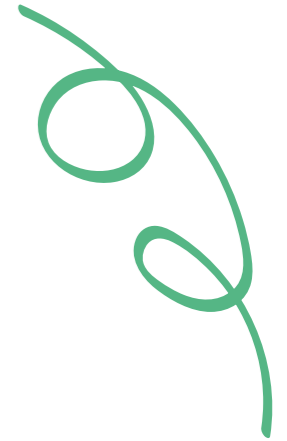
## Juniper's JoinUp ecosystem vs. "All-in-one" monosystem

You will be told you can save money through consolidation, but a monosystem can't provide you with the depth and expertise of the specialist tools you rely on.

With an ecosystem, you don't have to choose between keeping what works and what doesn't.

Our JoinUp approach enables you to easily integrate the right-sized, right-priced, and perfectly connected tools you use every day.

Save money without sacrificing on depth and support.



# JoinUp, the UK's first ecosystem for schools.

Think of JoinUp with Juniper as a way of doing things that help schools understand their unique challenges and achieve better outcomes.

Our ecosystem strategy makes sure everything works together, not against each other.

You get access to a best-in-class set of smart tools and school support that work together to fix problems.

Your school can confidently use research and real-world knowledge to tackle the most important challenges.



## It understands the whole picture

JoinUp with Juniper looks at everything happening in the school - like an X-ray - and finds the real reasons behind problems.

Why are students missing school?

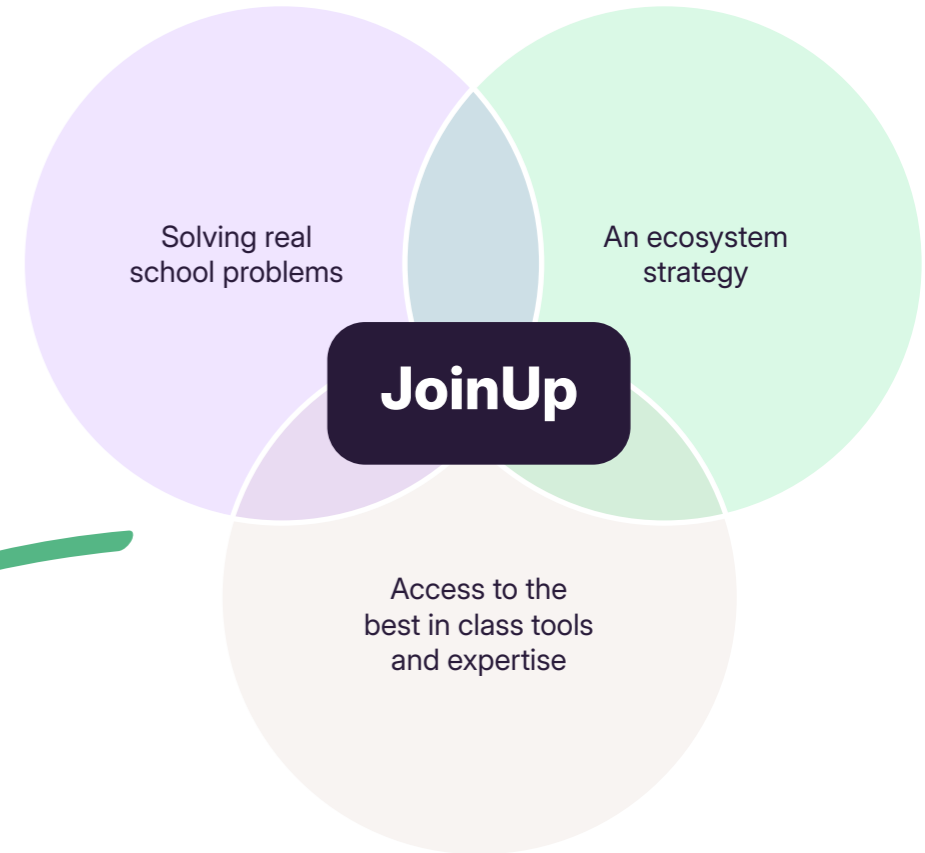
Why are teachers feeling tired?

Why are parents not as involved as they should be?

Instead of forcing an "all-in-one" solution on every member of your team, it adapts to what your school really needs to create positive change.

# JoinUp with Juniper

JoinUp is a new operating system approach for schools - a modular, adaptable systems thinking way of working, designed to tackle the real challenges schools face, head-on.



# Juniper's JoinUp strategy in action.

**As an example, persistent absenteeism and school avoidance are complex challenges that demand adaptive, nuanced solutions.**

**Some students miss a lot of school, and this can happen for many different reasons.**

It's a big problem, and it's not easy to solve because every setting is different.

Some schools try to fix this problem with "one-size-fits-all" solutions.

But these systems are very rigid, which means they can't adapt, analyse, or change easily. They often:

- Push parents away because the communications feel too impersonal.
- Frustrate teachers because they don't provide the right support.
- Miss the real reasons why students aren't coming to school.

Instead of helping, these systems can accidentally make the problem worse, making it harder for the school to create lasting change.



# Juniper's approach is different.

Juniper believes schools work like ecosystems where every part (teachers, students, and parents) is connected and helps each other grow.

Juniper's interconnected tools create positive changes (or "ripple effects") across a school community:

1. Juniper finds why students miss school and creates a supportive environment to improve attendance.
2. Our community engagement tools help address the root causes of absenteeism, improving attendance.
3. Schools build trust by sharing personal messages on platforms parents already use, helping reduce complaints.

**So, while monosystems try to run schools with rules that don't fit everyone, Juniper's ecosystem gives schools the power to solve problems their own way.**

# Ask us anything.



We know you'll have questions! And we're ready to answer them. So challenge us, we're up for it!

1. Why have you chosen an ecosystem approach?
2. How do I know if our school has a 'monosystem'?
3. What is the best way to use Juniper's ecosystem to help my school?

***Juniper's ecosystem provides schools and MATs with a right-sized MIS and specialist tools including:***

- Primary tracking
- Sira Analytics
- HR support and systems
- Integrated payroll and office services
- Websites and the only parental communication tool that harnesses social media

[junipereducation.org/join-up](https://junipereducation.org/join-up)

***How can I learn more about Juniper Education?***

Scan the QR code to learn more about JoinUp with Juniper, or speak to one of our Bett team.

